

# Getac

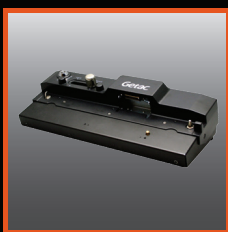
Rugged Mobile Computing Solutions

## B300

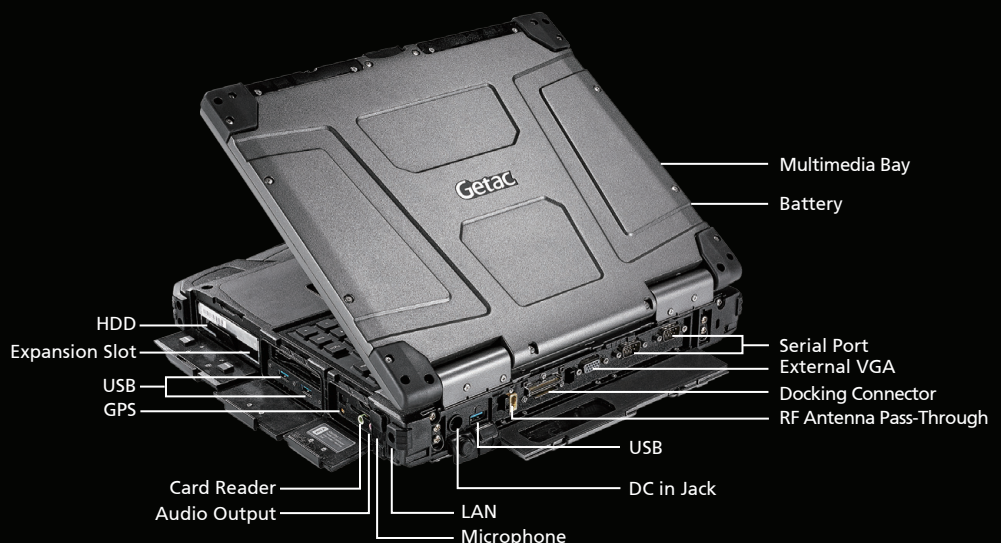
### Fully Rugged Notebook



- 6th Generation Intel® Core™ i7 / i5 vPro™ Processor
- 13.3 " Getac QuadraClear® Sunlight Readable Display up to 1400 Nits
- Up to 30 Hours of Battery Life with Dual Battery System
- Enhanced Enterprise Security with optional Intel vPro, Windows Disk Encryption, TPM 2.0 and many more multi-factor authentication options
- Extreme ruggedness with 4ft operating drop rating, vibration and sand resistant and operating temperatures of -29°C ~ 60°C (-20°F ~ 140°F)



Office Dock





## Specifications

<b>Model Name</b>	B300 G6		
<b>Operating System</b>	Windows® 7 Professional Windows® 10 Professional		
<b>Mobile Computing Platform</b>	<p>Intel® Core™ i7 Technology Intel® Core™ i7-6500U Processor 2.5GHz Max. 3.1GHz with Intel® Turbo Boost Technology - 4MB Intel® Smart Cache</p> <p>Intel® Core™ i7 vPro™ Technology Option Intel® Core™ i7-6600U vPro™ Processor 2.6GHz Max. 3.4GHz with Intel® Turbo Boost Technology - 4MB Intel® Smart Cache</p> <p>Intel® Core™ i5 Technology Intel® Core™ i5-6200U Processor 2.3GHz Max. 2.8GHz with Intel® Turbo Boost Technology - 3MB Intel® Smart Cache</p> <p>Intel® Core™ i5 vPro™ Technology Optional Intel® Core™ i5-6300U vPro™ Processor 2.4GHz Max. 3.0GHz with Intel® Turbo Boost Technology - 3MB Intel® Smart Cache</p>		<p>LAN (RJ45) x 1 HDMI x 1 External GPS antenna port (only with optional GPS) x 1 Docking connector (80-pin) x 1 Optional RF antenna pass-through for GPS and WWAN</p>
<b>VGA Controller</b>	Intel® HD Graphics 520 <sup>i</sup>	<b>Communication Interface</b>	<p>10/100/1000 base-T Ethernet Intel® Dual Band Wireless-AC 8260, 802.11ac Bluetooth (v4.2)<sup>ii</sup> Optional dedicated GPS</p>
<b>Display</b>	<p>13.3" TFT LCD XGA (1024 x 768) 700 nits display Optional 1400 nits QuadraClear® sunlight readable display with touchscreen</p>	<b>Software</b>	<p>Getac Utility Adobe® Reader®</p>
<b>Storage &amp; Memory</b>	<p>4GB DDR4 expandable to 16GB SATA 500GB HDD Optional SATA 1TB HDD Optional SATA 128GB / 256 GB / 512GB</p>	<b>Security Feature</b>	<p>Intel® vPro™ Technology TPM 2.0 Fingerprint scanner Smart Card reader (only with DVD Super Multi Drive) Kensington lock</p>
<b>Keyboard</b>	<p>LED backlit membrane keyboard Optional LED backlit rubber keyboard</p>	<b>Power</b>	<p>AC adapter (90W, 100-240VAC, 50 / 60Hz) Li-Ion smart battery (10.8V, 8700mAh) (up to 15 hours of battery life)<sup>iii</sup> Optional Multimedia Bay 2<sup>nd</sup> Li-Ion smart battery (10.8V, 8700mAh)</p>
<b>Pointing Device</b>	<p>Touchscreen - Optional pressure sensitive touchscreen Touchpad - Glide touchpad with scroll bar</p>	<b>Dimension (W x D x H) &amp; Weight</b>	<p>303.5 x 263 x 60 mm (11.9" x 10.35" x 2.36"), 3.5 kg (7.7 lbs)<sup>iv</sup></p>
<b>Expansion Slot</b>	<p>PCMCIA Type II x 1 + ExpressCard/54 x 1 SD card reader x 1</p>	<b>Rugged Feature</b>	<p>MIL-STD-810G certified and IP65 certified MIL-STD-461F certified<sup>v</sup> Optional ANSI/ISA 12.12.01 Full magnesium alloy case Shock-protected removable HDD Vibration &amp; drop compliance Optional salt fog compliance Optional night vision</p>
<b>Multimedia Bay</b>	<p>Optional DVD super multi drive Optional 2<sup>nd</sup> battery Optional 2<sup>nd</sup> storage: HDD 500 GB / 1TB ; SSD 128 / 256 GB / 512GB</p>	<b>Environmental Specification</b>	<p>Temperature<sup>vi</sup>: - Operating: -29°C to 60°C / -20°F to 140°F - Storage: -51°C to 71°C / -60°F to 160°F Humidity: - 95% RH , non-condensing</p>
<b>I/O Interface</b>	<p>Serial port (9-pin; D-sub) x 2 External VGA (15-pin; D-sub) x 1 Microphone (Mini-jack) x 1 Audio output (Mini-jack) x 1 DC in Jack x 1 USB 3.0 (9-pin) x 3</p>	<b>Optional Accessories</b>	<p>Carry bag Battery charger (Two Bay) Multi-Bay Charger (Eight Bay) Vehicle adapter (90W, 11-16VDC and 22-32VDC) MIL-STD-461F certified AC adapter (90W, 100-240VAC) Multimedia bay 2<sup>nd</sup> battery (10.8V, 8700mAh) Multimedia bay 2<sup>nd</sup> HDD Stylus and tether Protection film Main battery (10.8V, 8700mAh) AC adapter (90W, 100-240VAC) Vehicle dock Office dock</p>

### Docking Solutions

	Serial Port	External VGA	Microphone	Audio Output	DC in Jack	USB	LAN	HDMI	RF Antenna Connector (GPS, WWAN, WLAN)
Vehicle Dock	2	1	1	1	1	4	1	--	GPS, WWAN (optional)
Office Dock	2	1	1	1	1	4	1	1	--

<sup>i</sup> Share memory size may vary by different operating system and RAM size.

<sup>ii</sup> Bluetooth performance and connectable distance may be subject to interference with the environments and performance on client devices, users may be able to reduce effects of interference by minimizing the number of active Bluetooth wireless devices that is operating in the area.

<sup>iii</sup> Battery life testing conducted under MobileMark 2007. Battery performance will vary upon software applications, wireless settings, power management settings, LCD brightness, customized modules and environmental conditions. The battery has a limited number of charge cycles and may eventually need to be replaced by a Getac service provider. Battery life and charge cycles vary by use and settings.

<sup>iv</sup> Weight varies from configurations and optional accessories.

<sup>v</sup> MIL-STD-461F 90W AC adapter sold separately.

<sup>vi</sup> Tested by a national independent third party test lab following MIL-STD-810G.



## Getac Technology Corporation

5F, Building A, No. 209, Section 1, Nangang Rd., Nangang Dist., Taipei City, 11568, Taiwan, R.O.C.

Tel: +886 2 2785 7888  
globalmarketing@getac.com  
www.getac.com

