

# USER GUIDE

## Teamgee S2 Laptop Tri-Screen Extender



✉ [tgmonitor\\_service@hotmail.com](mailto:tgmonitor_service@hotmail.com)

### Warm tips:

1. Please ensure type-c data wire is connected well with device interface.
2. This product supports whole function of type-c (charging and video), integrated one line. If screen cannot be powered on or restarted, please supply external power of 5V, 2A.
3. The PD interface used to connect the product must use the HDMI TO TYPE-C data cable in the package and be externally powered.

Windows

Mac

Android



## Product Introduction

---

S2 is a multi-function plug and play dual-screen laptop monitor that is portable, foldable, It can help quickly build a personal mobile studio. Provide a perfect solution for laptop users with multi-screen synchronous display and multi-screen separate display, which can improve your work efficiency by up to 50% and achieve efficient multi-tasking. It supports the same screen display of some models of Samsung, Huawei and others. It also supports the computer mode of the smart phone system as well as audio and video transmission, etc.

S2 holder is easy to use. Clamp the holder to the top of the computer screen, and it can be easily fixed without falling off. It can support the case of laptop from 13 inches to 17.3 inches, and can be removed and used as a single screen. The screen has its own support that can be adjusted for different angles, providing different fun experience for professionals, office workers, gamers, stock traders, entrepreneurs, programmers and students.

The S2 screen can independently adjust parameters such as brightness, sound, and contrast. It is equipped with HDMI/Type-C interfaces, allowing for versatile video and data expansion without the need for a docking station. As long as it is a Type-C laptop with combined signal and power capabilities, you can achieve a seamless connection and display. Devices such as desktop computers, laptops, mini PCs, set-top boxes, and gaming consoles with HDMI output interfaces can directly connect to the display. However, the screen needs to be powered externally in order to light up (using the custom HDMI TO TYPE-C cable to connect the product to the computer).

Finally, S2 screen splitter can provide a complete 180 degree rotation on a single screen. You can choose your best view angle for the optimum visual experience.



---

## Contents of Instruction

---

### Product Attributes

1. Product host .....	1
2. Accessories .....	1
3. Parameters .....	1

### Installation and Storage

1. Expand the monitor .....	2
2. Stretch the frame .....	2
3. Adjust the stand .....	2
4. Opening Sequence .....	3
5. Closing Sequence .....	3

<b>Key Definitions .....</b>	<b>3</b>
------------------------------	----------

### Connection Mode

1. Connect S2 with Laptop .....	4
2. Device power supply connection mode .....	4

### Audio Settings

1. Change sound settings of Windows 10 / Windows 11 .....	5
2. Change sound settings of MAC OS PC .....	6

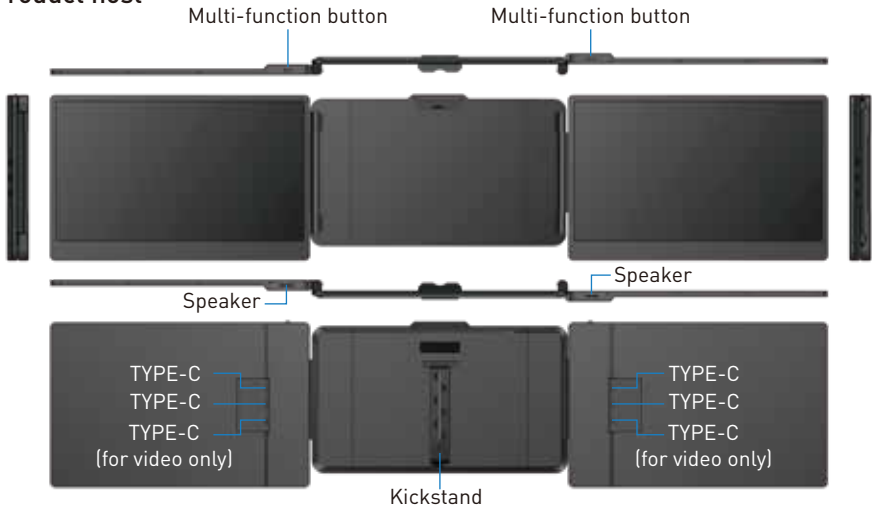
### Display Mode

1. Windows 10 / Windows 11 Display Settings .....	7
2. MacOS 13 Ventura Display Settings .....	8

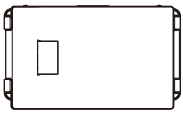
<b>Transportation, Storage and Safety Information .....</b>	<b>9</b>
---	----------

# Product Attributes

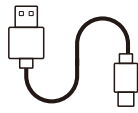
## 1. Product host



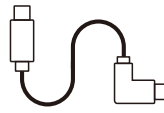
## 2. Accessories



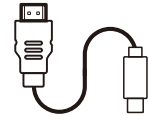
HOST



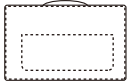
USB-A to USB-C \*2



USB-C to USB-C \*2



HDMI to TYPE-C



BAG

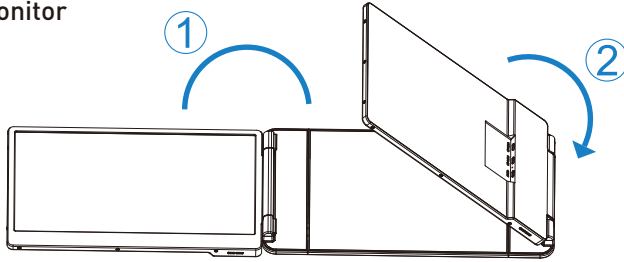
## 3. Parameters

Weight:	1.62 Kg	Screen Size:	14 Inches
Aspect Ratio:	16:9	Panel Type:	IPS Wide Viewing Angle
Size:	353x207x38.7mm	Average Brightness:	300CD/M <sup>2</sup>
Refresh Rate:	60Hz	Type-C Input:	5V-20V / 5A Max
Resolution:	1920x1080 P	Type-C Output:	5V-20V / 4.25A Max
Speakers:	2	Ports:	Type-C x3

# Installation and Storage

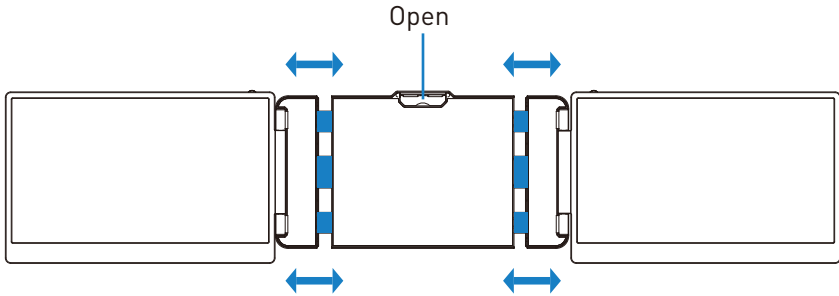
---

## 1. Expand the monitor

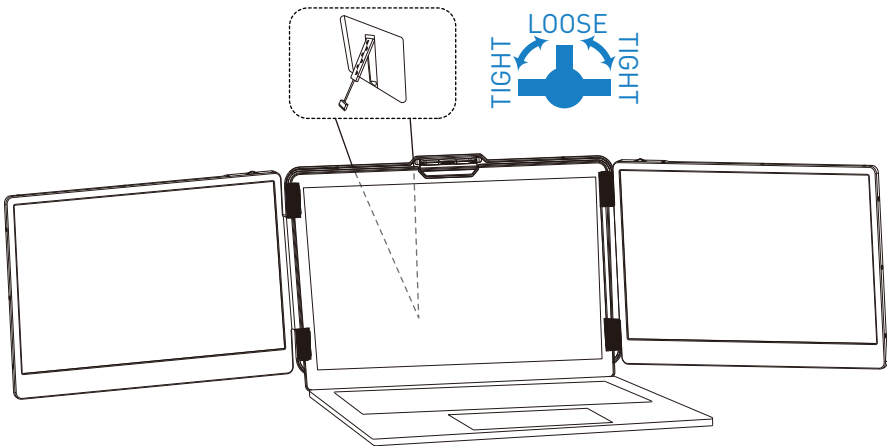


\*Note: Please expand the monitors in order to avoid damage.

## 2. Stretch the frame

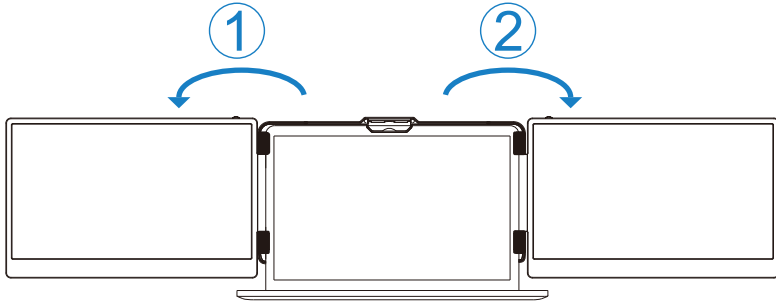


## 3. Adjust the stand

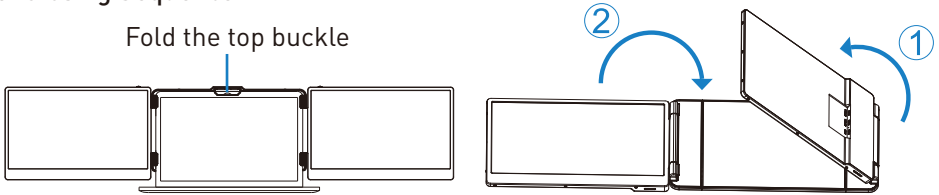


# Installation and Storage

## 4. Opening Sequence



## 5. Closing Sequence



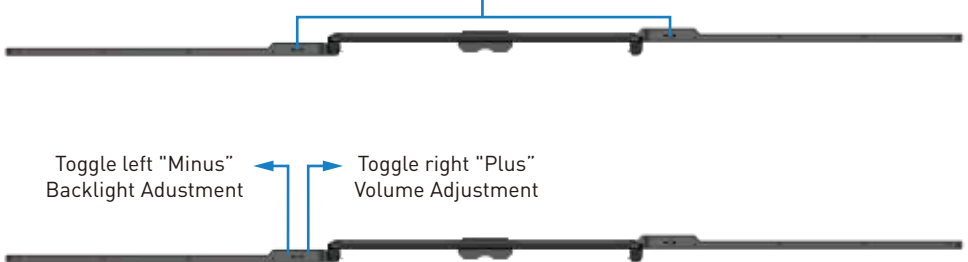
Note: Please follow the sequence of opening and closing to avoid damage of the device.



When folding the screen, pull the bracket out to the appropriate position, and fix the screen in the silicone of the bracket. Otherwise, forcibly closing it will damage the screen!

## Key Definitions

Menu/Selection/Confirmation Button  
Press and hold for 2 seconds to return. Press and hold for 3 seconds to shut down



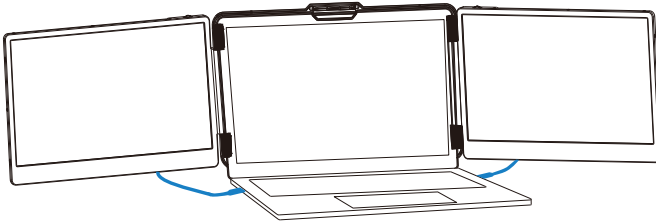
# Connection Mode

---

## 1. Connect S2 with Laptop

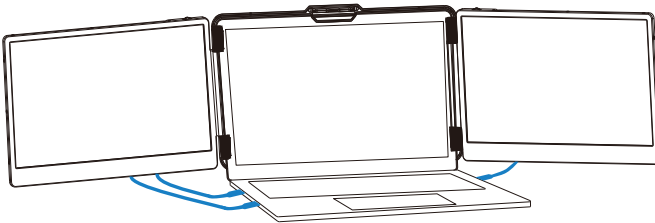
### TYPE-C Connection:

If your laptop has two full-featured Type-C ports, you can connect the S2 directly to your laptop with two Type-C cables.



### TYPE-C & HDMI & USB-A Connection:

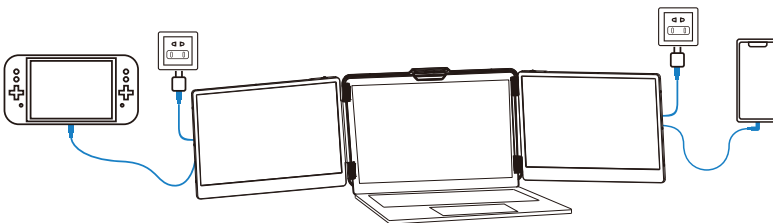
If your laptop has one full-featured Type-c port, one USB-A port and one HDMI port, please first connect one monitor using the USB-C cable. Then connect the other monitor using the USB-A to USB-C cable and the HDMI to Type-C cable.



### Notice:

If the display has no signal or the signal is unstable after connection, please connect an external 5V/2A power adapter to power the laptop

## 2. Connect S2 with Mobile Phone with Other Devices



Switch connection mode  
(External power supply required)

Mobile phone connection mode  
(External power supply required)

# Audio Settings

---

## 1. Change sound settings of Windows 10 / Windows 11

1.1 Right click the loudspeaker icon located in the bottom-right corner.

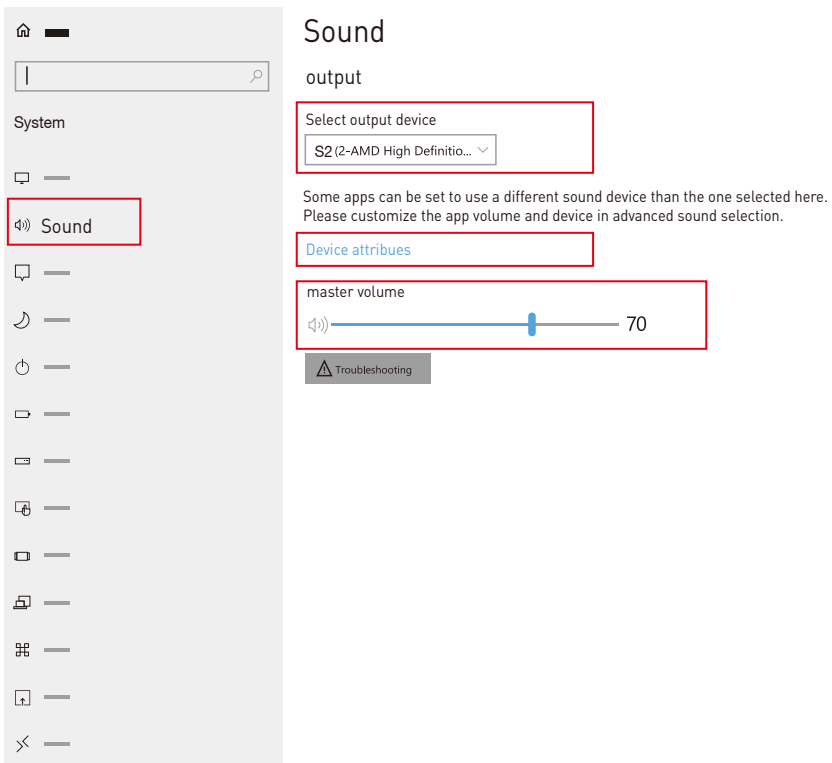


1.2 Select "switch on sound " in pop-up dialog box

1.3 Left click "turn on sound settings" and pop-up the box as provided, here users can set about sound

### Here users can set about sound

1. Master volume;
2. Select output device: { S2 / Speaker };
3. Device attributes.



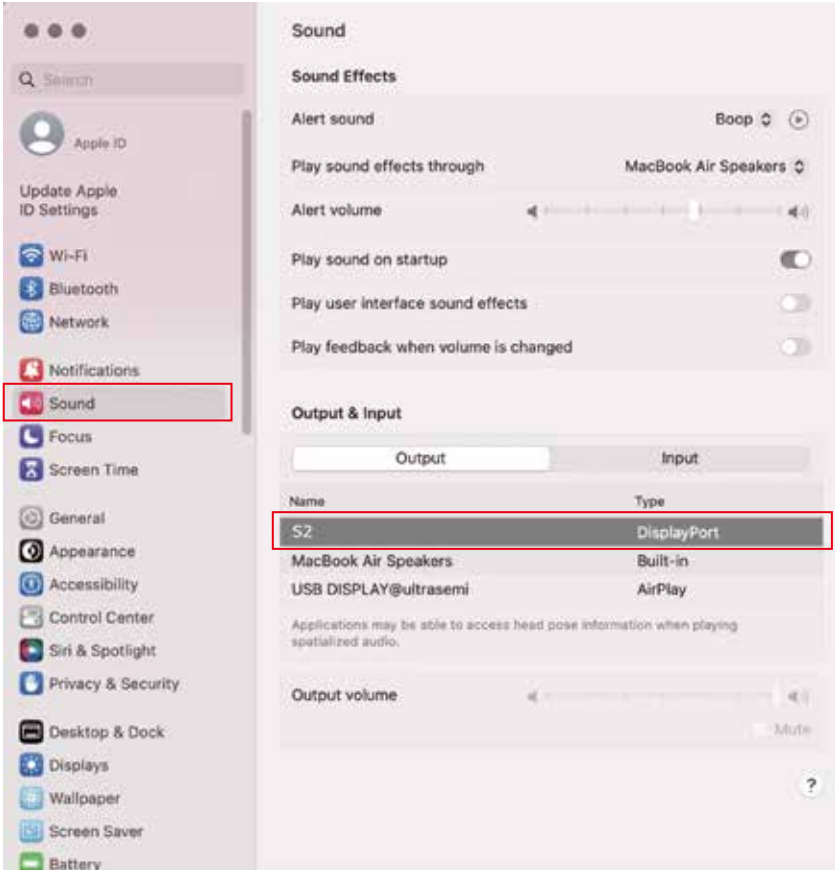
# Audio Settings

## 2. Change sound settings of MAC OS PC

2.1. Choose Apple menu > System Settings



2.2. Click "Output", then select the device you want use for the list of sound output devices: { S2 / Speaker }

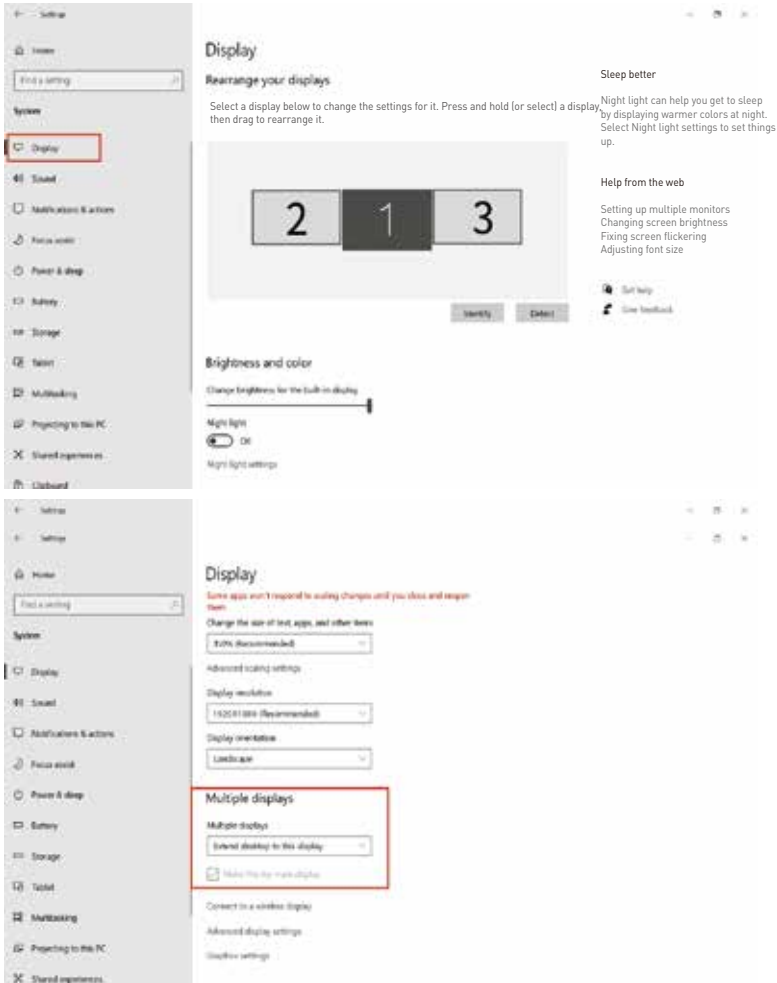


# Display Mode

## 1. Windows 10 / Windows 11 Display Settings

1.1 Right-click a blank area of the desktop. Select 'Display Settings' from the pop-up dialogue box.

Left click "Display Settings" to open the settings dialogue box, shown in the figure:



1.2 Under the "Rearrange displays" section, drag and drop each display to rearrange them according to their physical layout of your desktop. Scroll down to the bottom of the page to further configure the display for extended or mirrored mode.

# Display Mode

## 2. MacOS 13 Ventura Display Settings

2.1 Enter the "System Preferences" menu



2.2 Configure your monitor

In this menu, you can set the resolution and mirror/extend the display you want.



2.3 Arrange Displays

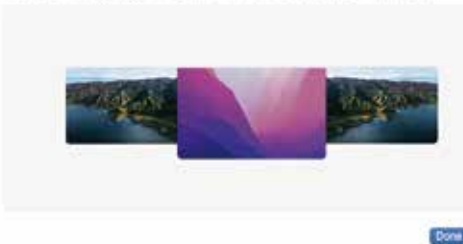
To rearrange displays, drag them to the desired position.

To mirror displays, hold Option key while dragging them on top of each other.

To relocate the menu bar, drag it to a different display.

### Arrange Displays

To rearrange displays, drag them to the desired position. To mirror displays, hold Option while dragging them on top of each other. To relocate the menu bar, drag it to a different display.



## Transportation, Storage And Safety Information

---

To ensure the normal use of this product and prevent accidents such as electric shock or fire, please read and understand all use requirements and operation procedures before using.

Please strictly abide by the following requirements.

1. Please tear off the protective film on the screen surface before use.
2. The DC power supply required by this product is AC/DC power adapter, which should be far away from heat source and placed in a well-ventilated place. The AC powered socket and AC power line should be well grounded and can withstand enough current demand.
3. The DC power input required by this product is 5V-20V  $\pm$  2V.
4. Attention should be paid to avoid excessive humidity and dust, to avoid circuit corrosion and failure.
5. Screen should not be challenged by external force.
6. Don't use sharp tools to touch the screen.
7. This product fits general business and domestic use, and ambient temperature ranging from -20~60°C is recommended.
8. Please turn off the power when you stop using produce.



# TeamGee

## Contact Us

For any support you need, feel free to contact us via email at

*[tgmonitor\\_service@hotmail.com](mailto:tgmonitor_service@hotmail.com)*.

We are here to help and will do our best to respond within 24 hours.